

FUJIFILM

FCR

See ahead with a digital view.



Image  
Intelligence™

FUJI COMPUTED RADIOGRAPHY  
CAPSULA **V** VIEW **NEW**

# CAPSULA V VIEW will bring change to your diagnosis with its advanced functionality, superb image quality, and high efficiency.

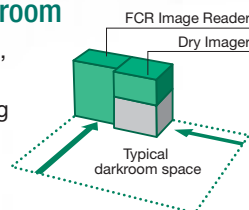
Keep the X-ray equipment you have installed now and obtain better results with the imaging plate (IP) featured CAPSULA V VIEW, the diagnostic X-ray imaging system that meets the needs of the new age and can be relied on to the next generation with its clear and high-quality images, computer storage and file maintenance capabilities, and ecological considerations.

## Turn Digital with Current X-ray Equipment

There's no need to add special digital apparatuses to your X-ray equipment, just continue using what you have installed now.

## Small Footprint and No More Darkroom

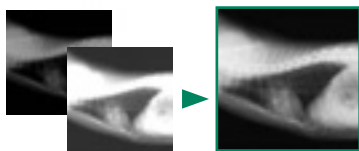
With dimensions of W59 x D38 x H81 cm, the image reader has a small footprint of only 0.224 m<sup>2</sup>\* and is capable of operating under full roomlight, which in effect does away with the darkroom.



\* Footprint of FCR CAPSULA X image reader

## Stable and High-quality Images

The system automatically makes adjustments with captured images and optimizes the images in line with diagnostic purpose and body part. Both density and contrast processing and frequency processing which controls sharpness are also automatically performed. As a result, the number of re-takes can be reduced for a lesser burden on loved pets.



## Simple Operation with Mouse and Keyboard

Whether with the mouse or the keyboard, operation is made easy. You can input the names of pet owners/animal patients into a patient database and once the information is registered, you can readily search and retrieve patient name information.

## Totally Dry for a Clean Environment

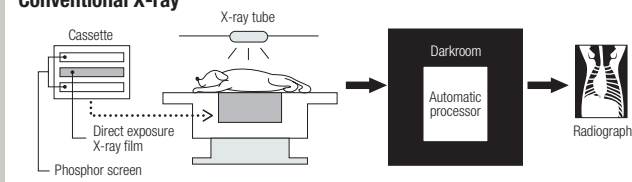
Create a clean environment that is friendly to both humans and pets with the Dry Imager which eliminates the use of processing chemicals and water, thereby releasing neither liquid waste nor odor. Benefit from a totally dry system which also isn't choosy about installation space.



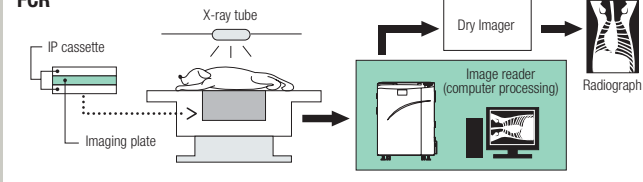
**NEW**

## FUJI COMPUTED RADIOGRAPHY CAPSULA V VIEW

### Conventional X-ray



### FCR



To capture as much diagnostic information possible, FCR uses the highly sensitive imaging plate (IP) to record information in place of conventional X-ray films and screens. The information recorded on the IP is read with laser light and then converted to digital information. And since the system automatically performs the optimal image processing that is required, re-takes are reduced. Images can be displayed for review on the monitor screen or be printed out on high-resolution film.

## 1 Input patient information

Operation is made easy with the mouse or from the keyboard. Input animal patient information such as species and weight, then from the Exposure Menu you can designate the body part to be exposed and obtain optimal images.



## 2 X-ray exposure

Instead of X-ray film, place an imaging plate (IP) into the IP cassette and set the cassette to the X-ray equipment in use. Imaging plates are highly sensitive compared to X-ray film and allow for minimal X-ray exposure, therefore being animal patient friendly.



Imaging Plate (IP)



## 3 Read the IP

There's no need for a darkroom. You can read and process images by simply setting the IP cassette to the reader in full roomlight. To your favor, IPs are totally reusable since recorded images can be erased, which brings efficiency to running costs.



FCR Image Reader

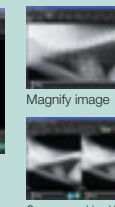


## 4 Diagnosis

Fujifilm's proprietary image processing technology, Image Intelligence™, makes it possible to automatically convert read images to their optimal state in accordance with body part and diagnostic purpose. You can also perform length and angle measurements, make comparisons with past images, or even process images at your own discretion.



Image Intelligence



Magnify image  
Compare archived image



## 5 Record and archive

Images registered with the patient database are compactly stored on DVD+RW/-RW for backup purposes and can be quickly retrieved and displayed. In addition, the PDI (Portable Data for Imaging) function allows you to write study images along with Simplified Viewer Software onto CD-R for distribution to pet owners.



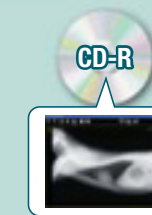
DVD+RW

DVD-RW

DVD+RW/-RW



Dry Imager

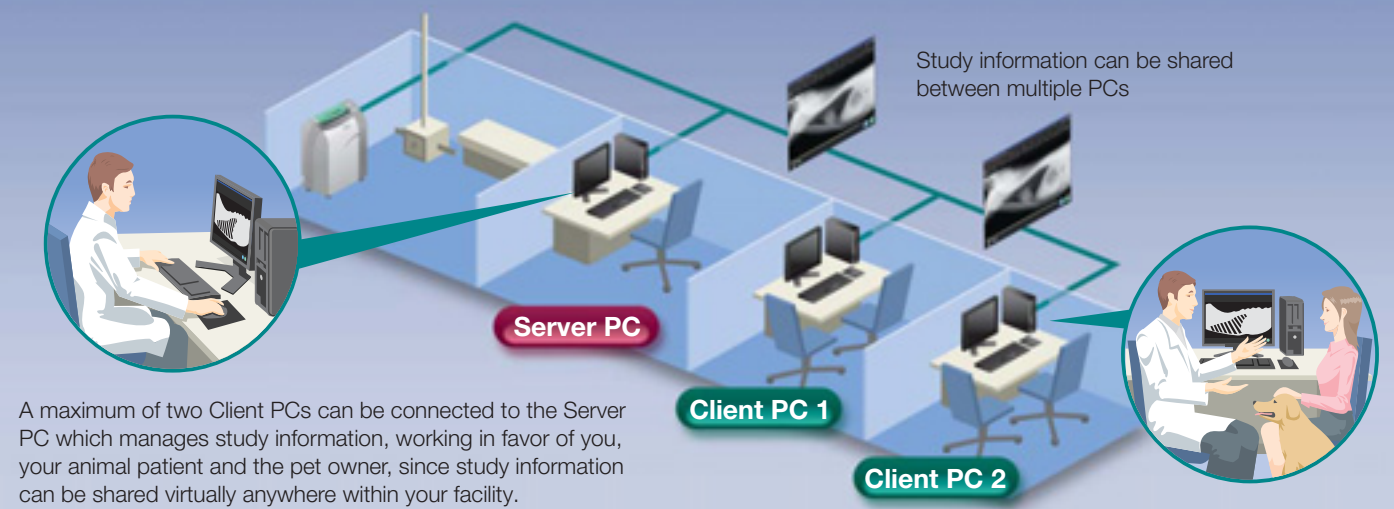


CD-R

PDI (Portable Data for Imaging)



## Study information at your convenience



A maximum of two Client PCs can be connected to the Server PC which manages study information, working in favor of you, your animal patient and the pet owner, since study information can be shared virtually anywhere within your facility.

**FUJIFILM**

**FUJIFILM Corporation**

<http://www.fujifilm.com/products/medical/>

26-30, NISHIAZABU 2-CHOME, MINATO-KU, TOKYO 106-8620, JAPAN

Ref. No. XB-865E (SK-08-04-F1120-F9711) Printed in Japan ©2008 FUJIFILM Corporation